

RM12-100

Technical Specifications

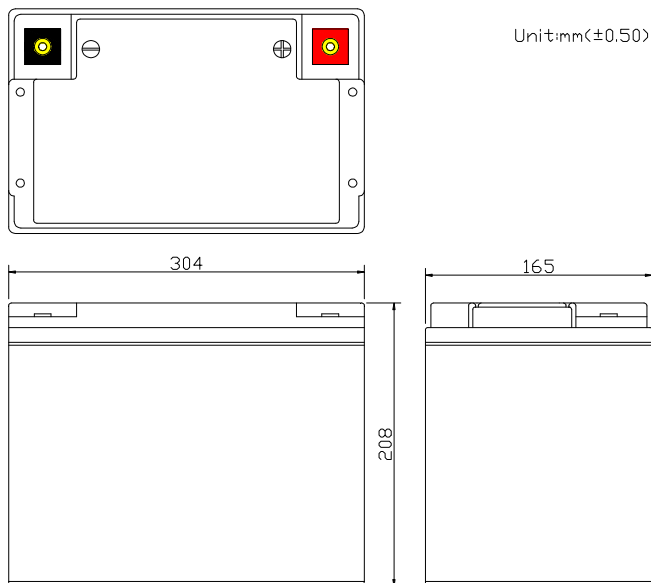
Nominal Voltage	12V
Nominal Capacity	100.0AH(20HR)
Dimension	
Length	12.05inch(306mm)
Width	6.65inches(169mm)
Height	8.19inches(208mm)
Total Height /w Terminal	8.19inches(208mm)
Weight	Approx 65.34lb(29.7kg)
Standard terminal	Type E

Capacity Specifications

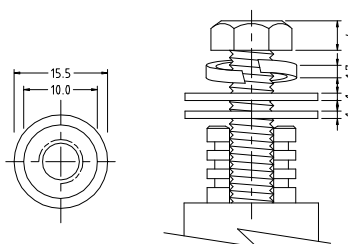
Cut Off Voltage	20Hr Rate(5.0A)	100.0AH
1.75v/c@25°C	10Hr Rate(9.2A)	92AH
1.75v/c	5Hr Rate(16A)	80AH
1.67v/c	1Hr Rate(60A)	60AH
1.67v/c	15Min Rate(200A)	50AH

Charging Specifications

		Bloc
Charge Voltage(<i>constant</i>)	Float	13.5~13.8
	Cycle	14.4~15.0
Internal Resistance (Fully Charged Battery)	< 4mΩ	
Discharge Current Amps (5 seconds maximum)	1000	
Max.Charge Current	30.0A	
Approx Final Charge Current (2.25v/c Float)	0.20(200mA)	
Approx Final Charge Current (2.45v/c Float)	0.80(800mA)	
Self Discharge	6 Months@25°C	



Unit:mm(±0.50)



Type E Terminal
Copper Inserted



Actual Wattage Capacity at Various Discharges (Voltage @25°C)

Cut Off Voltage	Time	Time					
		5min	10min	15min	30min	45min	60min
9.6V	W	4800.0	3120.0	2400.0	1380.0	1018.0	780.0
9.9V	W	4646.0	3058.0	2352.0	1366.0	1012.4	772.0
10.2V	W	4446.0	2988.0	2300.0	1348.0	993.6	762.0
10.5V	W	4184.0	2884.0	2230.0	1318.0	974.0	749.6
10.8V	W	3616.0	2662.0	2132.0	1270.0	925.0	727.8

Sales Office:

9/F, 30 Wong Chuk Hang Road, Aberdeen, Hong Kong

Tel: 2555-1394 ext163 Web: www.remcobattery.com

Fax: 2873-4229

Email: sales@remcobattery.com