

## RM12-100DC

### Technical Specifications

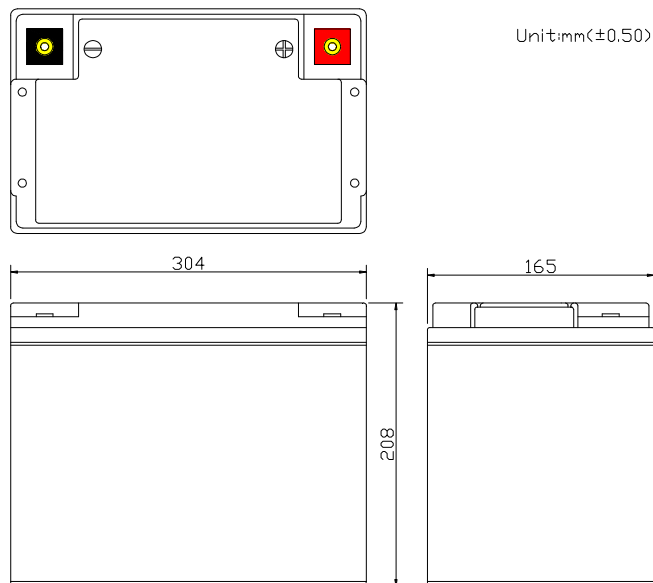
Nominal Voltage	12V
Nominal Capacity	100.0AH(20HR)
Dimension	
Length	12.05inch(306mm)
Width	6.66inches(169mm)
Height	8.19inches(208mm)
Total Height /w Terminal	8.19inches(208mm)
Weight	Approx 65.34lb(29.7kg)
Standard terminal	Type E

### Capacity Specifications

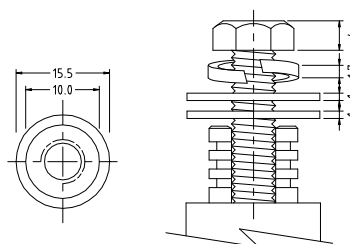
Cut Off Voltage	20Hr Rate(5.0A)	105.0AH
1.75v/c@25°C	10Hr Rate(9.2A)	92AH
1.75v/c	5Hr Rate(16A)	80AH
1.67v/c	1Hr Rate(60A)	60AH
1.67v/c	30Min Rate(110A)	55AH

### Charging Specifications

		Bloc
Charge Voltage( <i>constant</i> )	Float	13.5~13.8
	Cycle	14.4~15.0
Internal Resistance (Fully Charged Battery)	< 4mΩ	
Discharge Current Amps (5 seconds maximum)	1000	
Max.Charge Current	30.0A	
Self Discharge	6 Months@25°C	



Unit:mm(±0.50)



Type E Terminal  
Copper Inserted



### Actual Wattage Capacity at Various Discharges (Voltage @25°C)

Cut Off Voltage	Time	Time						
		5min	10min	15min	30min	45min	60min	
9.6V	W	4752.0	3088.8	2376.0	1366.2	1007.8	772.2	
9.9V	W	4599.5	3027.4	2328.5	1352.3	1002.3	764.3	
10.2V	W	4401.5	2958.1	2277.0	1334.5	983.7	754.4	
10.5V	W	4142.2	2855.2	2207.7	1304.8	964.3	742.1	
10.8V	W	3579.8	2635.4	2110.7	1257.3	915.8	720.5	

### Sales Office:

9/F, 30 Wong Chuk Hang Road, Aberdeen, Hong Kong

Tel: 2555-1394 ext163 Web: [www.remcobattery.com](http://www.remcobattery.com)

Fax: 2873-4229

Email: [sales@remcobattery.com](mailto:sales@remcobattery.com)

Rev. 100719