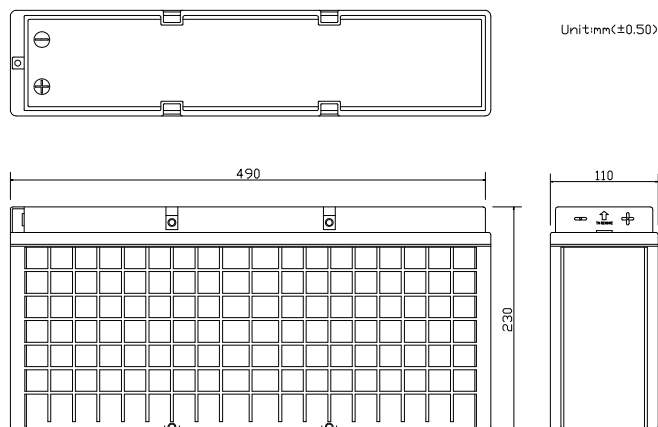


## RM12-105FT

### Technical Specifications

Nominal Voltage	12V
Nominal Capacity	105.0AH (20HR)
Dimension	
Length	19.29inch (490mm)
Width	4.33inch (110mm)
Height	9.06inch (230mm)
Total Height /w Terminal	9.06inch (230mm)
Weight	Approx 69.72lb (31.69kg)
Standard terminals	Type H

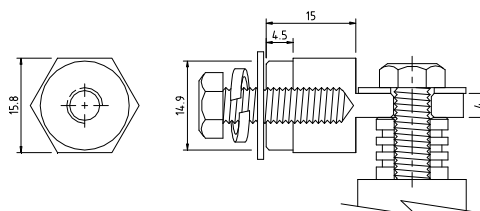


### Capacity Specifications

Cut Off Voltage	20Hr Rate(5.25A)	105.0AH
1.75v/c@25°C	10Hr Rate(9.66A)	96.6AH
1.75v/c	5Hr Rate(16.8A)	84AH
1.67v/c	1Hr Rate(63A)	63AH
1.67v/c	15Min Rate(210A)	52.5AH

### Charging Specifications

		Bloc
Charge Voltage(constant)	Float	13.5~13.8
	Cycle	14.4~15.0
Internal Resistance (Fully Charged Battery)	< 4mΩ	
Discharge Current Amps (5 seconds maximum)	1000	
Max.Charge Current	31.5A	
Approx Final Charge Current (2.25v/c Float)	0.20(200mA)	
Approx Final Charge Current (2.45v/c Float)	0.80(800mA)	
Self Discharge	6 Months@25°C	



Type H Terminal



### Actual Wattage Capacity at Various Discharges (Voltage @25°C)

Cut Off Voltage	Time	Time					
		5min	10min	15min	30min	45min	60min
9.6V	W	5040.0	3276.0	2520.0	1449.0	1068.9	819.0
9.9V	W	4878.3	3210.9	2469.6	1434.3	1063.0	810.6
10.2V	W	4668.3	3137.4	2415.0	1415.4	1043.3	800.1
10.5V	W	4393.2	3028.2	2341.5	1383.9	1022.7	787.1
10.8V	W	3796.8	2795.1	2238.6	1333.5	971.3	764.2

### Sales Office:

9/F, 30 Wong Chuk Hang Road, Aberdeen, Hong Kong

Tel: 2555-1394 ext163 Web: [www.remcobattery.com](http://www.remcobattery.com)

Fax: 2873-4229

Email: [sales@remcobattery.com](mailto:sales@remcobattery.com)