

## RM12-12HR

### Technical Specifications

Nominal Voltage	12V
Nominal Capacity	12.0AH(20HR)
Dimension	
Length	5.94inches(151mm)
Width	3.86inches(98mm)
Height	3.74inches(95mm)
Total Height /w Terminal	3.98inches(101mm)
Weight	Approx 8.12lb(3.69kg)
Standard terminal	Type A/G

### Capacity Specifications

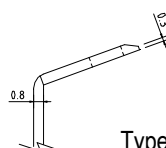
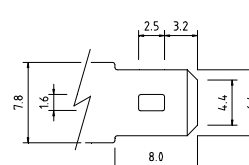
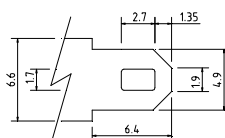
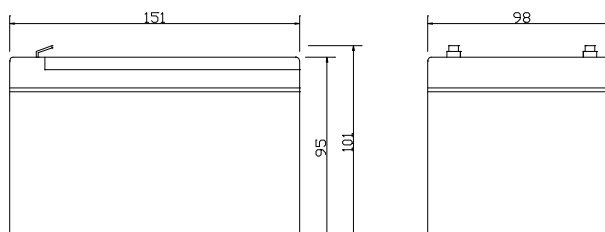
Cut Off Voltage		
1.75v/c@25°C	10Hr Rate(1.1A)	11.0AH
1.75v/c	5Hr Rate(2.04A)	10.2AH
1.67v/c	1Hr Rate(7.44A)	7.4AH
1.67v/c	15Min Rate(24A)	6.0AH

### Charging Specifications

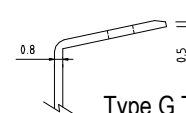
		Bloc
Charge Voltage( <i>constant</i> )	Float	13.5~13.8
	Cycle	14.4~15.0
Internal Resistance (Fully Charged Battery)	< 16mΩ	
Discharge Current Amps (5 seconds maximum)	180	
Max.Charge Current	3.6A	
Self Discharge	6 Months@25°C	



Unit:mm(±0.50)



Type A Terminal



Type G Terminal  
(Optional)



### Actual Wattage/Ampere Capacity at Various Discharge (Voltage @25°C)

Cut Off Voltage	Time	Time					
		5min	10min	15min	30min	45min	60min
9.6V	W	585.6	380.6	292.8	168.4	124.2	95.2
9.9V	W	566.8	373.1	286.9	166.7	123.5	94.2
10.2V	W	542.4	364.5	280.6	164.5	121.2	93.0
10.5V	W	510.4	351.8	272.1	160.8	118.8	91.5
10.8V	W	441.2	324.8	260.1	154.9	112.9	88.8

#### Sales Office:

9/F, 30 Wong Chuk Hang Road, Aberdeen, Hong Kong

Tel: 2555-1394 ext163 Web: [www.remcobattery.com](http://www.remcobattery.com)

Fax: 2873-4229

Email: [sales@remcobattery.com](mailto:sales@remcobattery.com)