

## RM12-140XU

### Technical Specifications

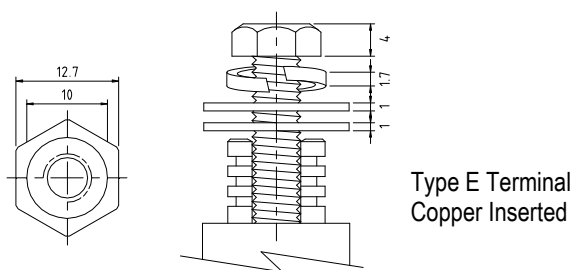
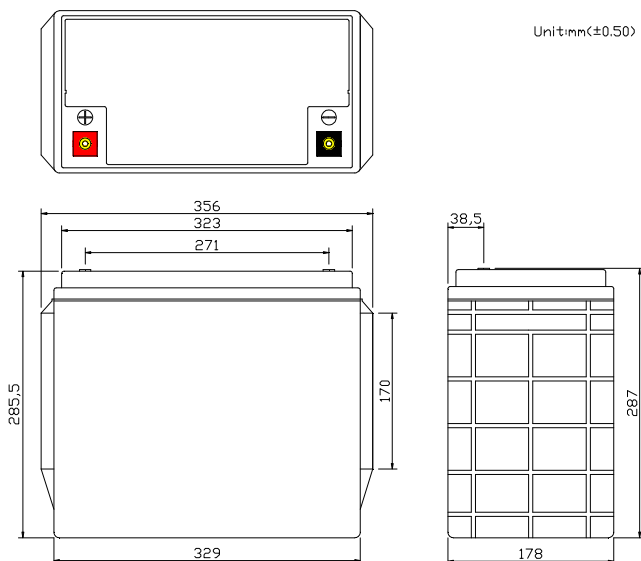
Nominal Voltage	12V
Nominal Capacity	140AH(20HR)
Dimension	
Length	14.02inch(356mm)
Width	7.01inch(178mm)
Height	11.26inch(286mm)
Total Height /w Terminal	11.3inch(287mm)
Weight	Approx 99.66lb(45.3kg)
Standard terminal	Type E

### Capacity Specifications

Cut Off Voltage	20Hr Rate(7.0A)	140.0AH
1.75v/c@25°C	10Hr Rate(12.88A)	128.8AH
1.75v/c	5Hr Rate(22.4A)	112AH
1.67v/c	1Hr Rate(84A)	84AH
1.67v/c	15Min Rate(280A)	70AH

### Charging Specifications

		Bloc
Charge Voltage( <i>constant</i> )	Float	13.5~13.8
	Cycle	14.4~15.0
Internal Resistance (Fully Charged Battery)	< 3.5 mΩ	
Discharge Current Amps (5 seconds maximum)	1000	
Max.Charge Current	42.0A	
Approx Final Charge Current (2.25v/c Float)	0.30(300mA)	
Approx Final Charge Current (2.45v/c Float)	0.80(800mA)	
Self Discharge	6 Months@25°C	



### Actual Wattage Capacity at Various Discharges (Voltage @25°C)

Cut Off Voltage	Time	Time					
		5min	10min	15min	30min	45min	60min
9.6V	W	6720.0	4368.0	3360.0	1932.0	1425.2	1092.0
9.9V	W	6504.4	4281.2	3292.8	1912.4	1417.4	1080.8
10.2V	W	6224.4	4183.2	3220.0	1887.2	1391.0	1066.8
10.5V	W	5857.6	4037.6	3122.0	1845.2	1363.6	1049.4
10.8V	W	5062.4	3726.8	2984.8	1778.0	1295.0	1018.9

#### Sales Office:

9/F, 30 Wong Chuk Hang Road, Aberdeen, Hong Kong

Tel: 2555-1394 ext163 Web: [www.remcobattery.com](http://www.remcobattery.com)

Fax: 2873-4229

Email: [sales@remcobattery.com](mailto:sales@remcobattery.com)