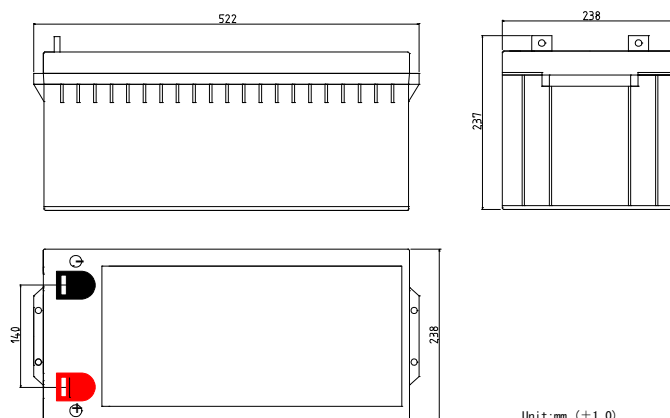


RM12-200

Technical Specifications

Nominal Voltage	12V
Nominal Capacity	200.0AH(20HR)
Dimension	
Length	20.55inches(522mm)
Width	9.45inches(240mm)
Height	8.62inches(219mm)
Total Height /w Terminal	9.45inches(240mm)
Weight	Approx 134.2lb(61.0kg)
Standard terminal	Type F16

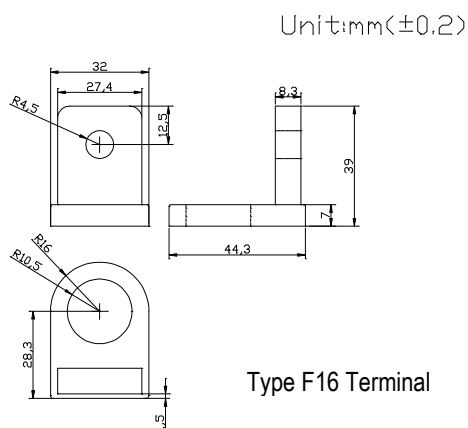


Capacity Specifications

Cut Off Voltage	20Hr Rate(10A)	200AH
1.75v/c@25°C	10Hr Rate(18.4A)	184AH
1.75v/c	5Hr Rate(32A)	160AH
1.67v/c	1Hr Rate(120A)	120AH
1.67v/c	15Min Rate(352A)	88AH

Charging Specifications

		Bloc
Charge Voltage(<i>constant</i>)	Float	13.5~13.8
	Cycle	14.4~15.0
Internal Resistance (Fully Charged Battery)	< 4mΩ	
Discharge Current Amps (5 seconds maximum)	1000	
Max.Charge Current	60.0A	
Self Discharge	6 Months@25°C	



Type F16 Terminal

Actual Wattage Capacity at Various Discharges (Voltage @25°C)

Cut Off Voltage	Time	Time				
		10min	15min	30min	45min	60min
9.6V	W	6240.0	4800.0	2760.0	2036.0	1560.0
9.9V	W	6116.0	4704.0	2732.0	2024.8	1544.0
10.2V	W	5976.0	4600.0	2696.0	1987.2	1524.0
10.5V	W	5768.0	4460.0	2636.0	1948.0	1499.2
10.8V	W	5324.0	4264.0	2540.0	1850.0	1455.6

Sales Office:

9/F, 30 Wong Chuk Hang Road, Aberdeen, Hong Kong

Tel: 2555-1394 ext163 Web: www.remcobattery.com

Fax: 2873-4229

Email: sales@remcobattery.com