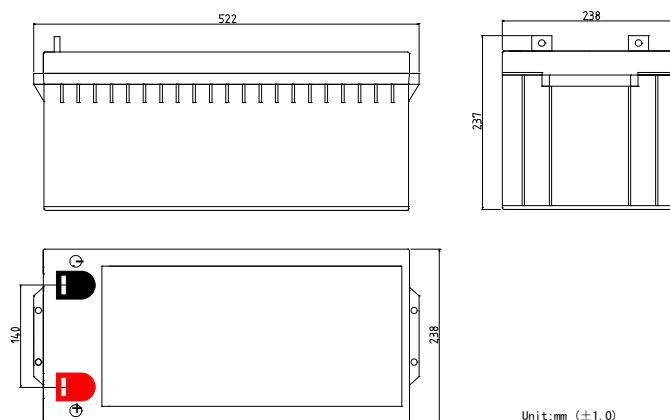


RM12-200DC

Technical Specifications

Nominal Voltage	12V
Nominal Capacity	200.0AH(20HR)
Dimension	
Length	20.55inches(522mm)
Width	9.45inches(240mm)
Height	8.62inches(219mm)
Total Height /w Terminal	9.45inches(240mm)
Weight	Approx 134.2lb(61.0kg)
Standard terminal	Type F16

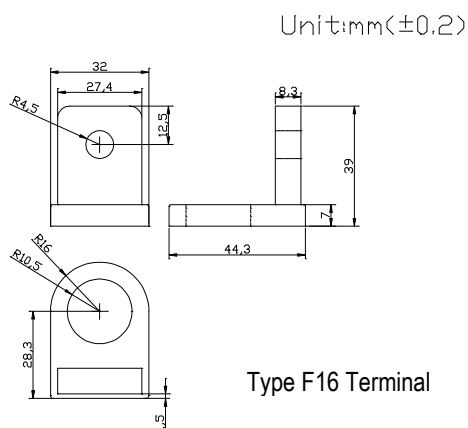


Capacity Specifications

Cut Off Voltage	20Hr Rate(10A)	200AH
1.75v/c@25°C	10Hr Rate(18.4A)	184AH
1.75v/c	5Hr Rate(32A)	160AH
1.67v/c	1Hr Rate(120A)	120AH
1.67v/c	15Min Rate(352A)	88AH

Charging Specifications

		Bloc
Charge Voltage(<i>constant</i>)	Float	13.5~13.8
	Cycle	14.4~15.0
Internal Resistance (Fully Charged Battery)	< 4mΩ	
Discharge Current Amps (5 seconds maximum)	1000	
Max.Charge Current	60.0A	
Self Discharge	6 Months@25°C	



Type F16 Terminal

Actual Wattage Capacity at Various Discharges (Voltage @25°C)

Cut Off Voltage	Time	Wattage Capacity					
		10min	15min	30min	45min	60min	
9.6V	W	4355	3565	2360	1791	1452	
9.9V	W	4140	3427	2294	1741	1421	
10.2V	W	3917	3288	2228	1692	1389	
10.5V	W	3700	3151	2161	1644	1358	
10.8V	W	3483	3013	2094	1596	1327	

Sales Office:

9/F, 30 Wong Chuk Hang Road, Aberdeen, Hong Kong

Tel: 2555-1394 ext163 Web: www.remcobattery.com

Fax: 2873-4229 Email: sales@remcobattery.com