

RM12-22HR

Technical Specifications

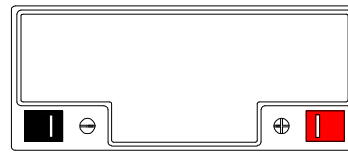
Nominal Voltage	12V
Nominal Capacity	22.0AH(20HR)
Dimension	
Length	7.17inches(182mm)
Width	2.99inch(76mm)
Height	6.57inch(167mm)
Total Height /w Terminal	6.57inch(167mm)
Weight	Approx 14.08lb(6.40kg)
Standard terminal	Type E

Capacity Specifications

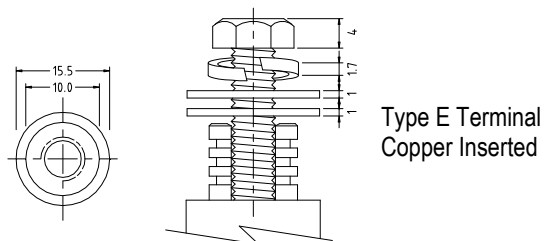
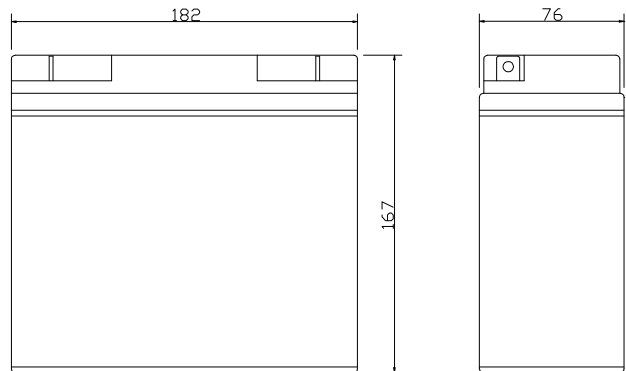
Cut Off Voltage		
1.75v/c@25°C	10Hr Rate(2.02A)	20.2AH
1.75v/c	5Hr Rate(3.74A)	18.7AH
1.67v/c	1Hr Rate(13.6A)	13.6AH
1.67v/c	15Min Rate(44A)	11.0AH

Charging Specifications

		Bloc
Charge Voltage(<i>constant</i>)	Float	13.5~13.8
	Cycle	14.4~15.0
Internal Resistance (Fully Charged Battery)	< 14mΩ	
Discharge Current Amps (5 seconds maximum)	220	
Max.Charge Current	6.6A	
Self Discharge	6 Months@25°C	



Unit:mm(±0.50)



Actual Wattage Capacity at Various Discharges (Voltage @25°C)

Cut Off Voltage	Time	Time						
		5min	10min	15min	30min	45min	60min	
9.6V	W	1104.0	717.6	552.0	317.4	234.1	179.4	
9.9V	W	1068.6	703.3	541.0	314.2	232.9	177.6	
10.2V	W	1022.6	687.2	529.0	310.0	228.5	175.3	
10.5V	W	962.3	663.3	512.9	303.1	224.0	172.4	
10.8V	W	831.7	612.3	490.4	292.1	212.8	167.4	

Sales Office:

9/F, 30 Wong Chuk Hang Road, Aberdeen, Hong Kong

Tel: 2555-1394 ext163 Web: www.remcobattery.com

Fax: 2873-4229

Email: sales@remcobattery.com