

## RM12-26DC

Unit:mm(±0.50)

### Technical Specifications

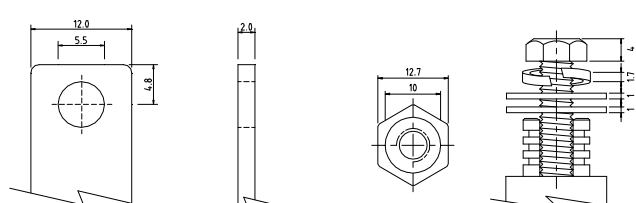
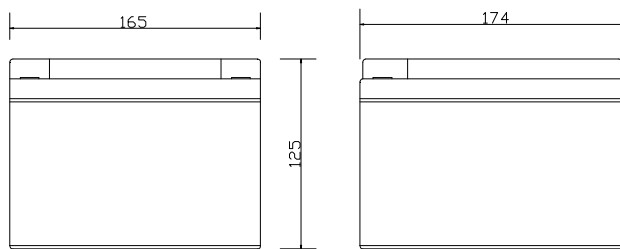
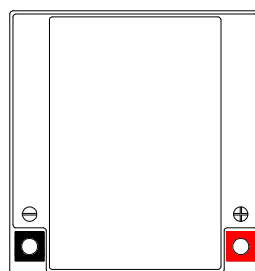
Nominal Voltage	12V
Nominal Capacity	26.0AH(20HR)
Dimension	
Length	6.87inch(174mm)
Width	6.50inch(165mm)
Height	4.92inch(125mm)
Total Height /w Terminal	4.921inch(125mm)
Weight	Approx 18.48lb(8.4kg)
Standard terminal	Type C/E

### Capacity Specifications

Cut Off Voltage	20Hr Rate(1.3A)	26.0AH
1.75v/c@25°C	10Hr Rate(2.39A)	23.9AH
1.75v/c	5Hr Rate(4.16A)	20.8AH
1.67v/c	1Hr Rate(15.6A)	15.6AH
1.67v/c	30Min Rate(28.6A)	14.3AH

### Charging Specifications

		Bloc
Charge Voltage( <i>constant</i> )	Float	13.5~13.8
	Cycle	14.4~15.0
Internal Resistance (Fully Charged Battery)	< 10mΩ	
Discharge Current Amps (5 seconds maximum)	260	
Max.Charge Current	7.8A	
Self Discharge	6 Months@25°C	



Type C Terminal  
Nut & Bolt

Type E Terminal  
Copper Inserted



### Actual Wattage Capacity at Various Discharges (Voltage @25°C)

Cut Off Voltage	Time	Time						
		5min	10min	15min	30min	45min	60min	
9.6V	W	1228.8	798.7	614.4	353.3	260.6	199.7	
9.9V	W	1189.4	782.8	602.1	349.7	259.2	197.6	
10.2V	W	1138.2	764.9	588.8	345.1	254.4	195.1	
10.5V	W	1071.1	738.3	570.9	337.4	249.3	191.9	
10.8V	W	925.7	681.5	545.8	325.1	236.8	186.3	

#### Sales Office:

9/F, 30 Wong Chuk Hang Road, Aberdeen, Hong Kong

Tel: 2555-1394 ext163 Web: [www.remcobattery.com](http://www.remcobattery.com)

Fax: 2873-4229

Email: [sales@remcobattery.com](mailto:sales@remcobattery.com)

Rev. 100719