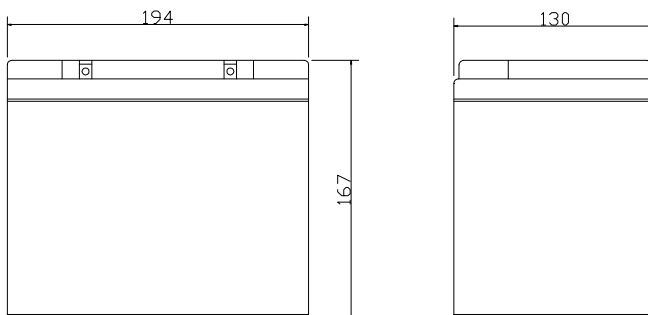
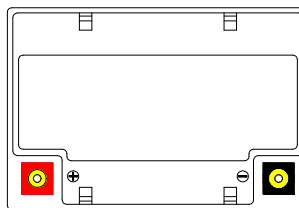


RM12-33

Unit:mm(± 0.50)

Technical Specifications

Nominal Voltage	12V
Nominal Capacity	33.0AH(20HR)
Dimension	
Length	7.64inches(194mm)
Width	5.12inches(130mm)
Height	6.58inches(167mm)
Total Height /w Terminal	6.58inches(167mm)
Weight	Approx 23.32lb(10.6kg)
Standard terminal	Type E

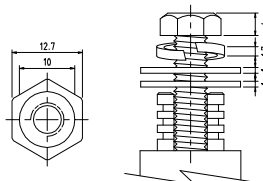


Capacity Specifications

Cut Off Voltage	20Hr Rate(1.65A)	33.0AH
1.75v/c@25°C	10Hr Rate(3.04A)	30.4AH
1.75v/c	5Hr Rate(5.28A)	26.4AH
1.67v/c	1Hr Rate(19.8A)	19.8AH
1.67v/c	15Min Rate(66A)	16.5AH

Charging Specifications

		Bloc
Charge Voltage(<i>constant</i>)	Float	13.5~13.8
	Cycle	14.4~15.0
Internal Resistance (Fully Charged Battery)	< 8mΩ	
Discharge Current Amps (5 seconds maximum)	330	
Max.Charge Current	9.9A	
Approx Final Charge Current (2.25v/c Float)	0.06(60mA)	
Approx Final Charge Current (2.45v/c Float)	0.33(330mA)	
Self Discharge	6 Months@25°C	



Type E Terminal
Copper Insert



Actual Wattage Capacity at Various Discharges (Voltage @25°C)

Cut Off Voltage	Time	Time					
		5min	10min	15min	30min	45min	60min
9.6V	W	1584.0	1029.6	792.0	455.4	335.9	257.4
9.9V	W	1533.2	1009.1	776.2	450.8	334.1	254.8
10.2V	W	1467.2	986.0	759.0	444.8	327.9	251.5
10.5V	W	1380.7	951.7	735.9	434.9	321.4	247.4
10.8V	W	1193.3	878.5	703.6	419.1	305.3	240.2

Sales Office:

9/F, 30 Wong Chuk Hang Road, Aberdeen, Hong Kong

Tel: 2555-1394 ext163 Web: www.remcobattery.com

Fax: 2873-4229

Email: sales@remcobattery.com