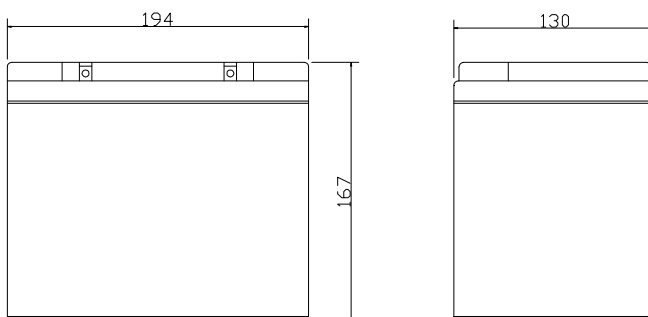
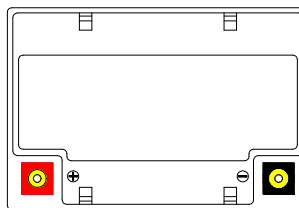


RM12-33DC

Unit:mm(± 0.50)

Technical Specifications

Nominal Voltage	12V
Nominal Capacity	33.0AH(20HR)
Dimension	
Length	7.64inches(194mm)
Width	5.12inches(130mm)
Height	6.58inches(167mm)
Total Height /w Terminal	6.58inches(167mm)
Weight	Approx 23.32lb(11.8kg)
Standard terminal	Type E

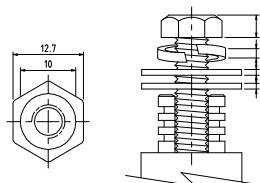


Capacity Specifications

Cut Off Voltage	20Hr Rate(1.65A)	33.0AH
1.75v/c@25°C	10Hr Rate(3.04A)	30.4AH
1.75v/c	5Hr Rate(5.28A)	26.4AH
1.67v/c	1Hr Rate(19.8A)	19.8AH
1.67v/c	30Min Rate(36.3A)	18.15AH

Charging Specifications

		Bloc
Charge Voltage(<i>constant</i>)	Float	13.5~13.8
	Cycle	14.4~15.0
Internal Resistance (Fully Charged Battery)	< 8mΩ	
Discharge Current Amps (5 seconds maximum)	330	
Max.Charge Current	9.9A	
Self Discharge	6 Months@25°C	



Type E Terminal
Copper Insert



Actual Wattage Capacity at Various Discharges (Voltage @25°C)

Cut Off Voltage	Time	Time					
		5min	10min	15min	30min	45min	60min
9.6V	W	1555.2	1010.9	777.6	447.1	329.8	252.7
9.9V	W	1505.3	990.8	762.0	442.6	328.0	250.1
10.2V	W	1440.5	968.1	745.2	436.8	321.9	246.9
10.5V	W	1355.6	934.4	722.5	427.0	315.6	242.9
10.8V	W	1171.6	862.5	690.8	411.5	299.7	235.8

Sales Office:

9/F, 30 Wong Chuk Hang Road, Aberdeen, Hong Kong

Tel: 2555-1394 ext163 Web: www.remcobattery.com

Fax: 2873-4229

Email: sales@remcobattery.com

Rev. 100719