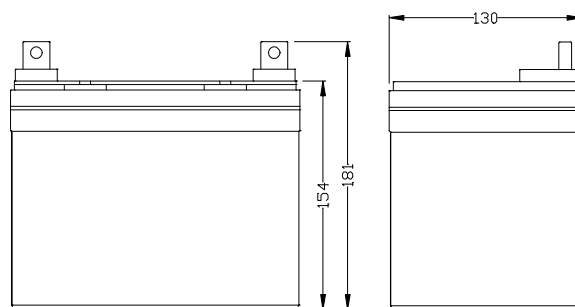


RM12-33DCM

Unit:mm(±0.5)

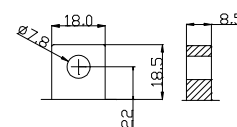
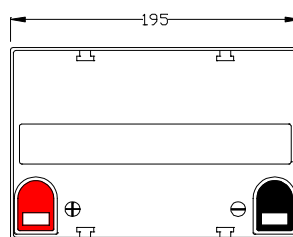
Technical Specifications

Nominal Voltage	12V
Nominal Capacity	33.0AH(20HR)
Dimension	
Length	7.68inches(195mm)
Width	5.12inches(130mm)
Height	6.06inches(154mm)
Total Height /w Terminal	7.13inches(181mm)
Weight	Approx 23.32lb(10.6kg)
Standard terminal	Type F7



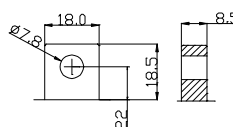
Capacity Specifications

Cut Off Voltage	20Hr Rate(1.65A)	33.0AH
1.75v/c@25°C	10Hr Rate(3.04A)	30.4AH
1.75v/c	5Hr Rate(5.28A)	26.4AH
1.67v/c	1Hr Rate(19.8A)	19.8AH
1.67v/c	30Min Rate(36.3A)	18.15AH



Charging Specifications

		Bloc
Charge Voltage(<i>constant</i>)	Float	13.5~13.8
	Cycle	14.4~15.0
Internal Resistance (Fully Charged Battery)	< 9mΩ	
Discharge Current Amps (5 seconds maximum)	330	
Max.Charge Current	9.9A	



Type F7 Terminal

Actual Wattage Capacity at Various Discharges (Voltage @25°C)

Final Voltage	Time (minutes)												
		5	10	15	30	45	60	180	300	480	600	1200	
9.6V	A	119.7	87.9	70.3	45.8	34.1	27.1	10.2	6.3	4.1	3.32	1.72	
	W	1342.8	905.7	688.0	407.4	302.7	243.2	100.7	64.9	44.4	36.48	20.75	
9.9V	A	108.4	81.1	64.6	42.6	32.4	26.2	10.1	6.2	4.0	3.28	1.71	
	W	1267.7	863.0	656.1	394.9	295.5	239.2	99.8	64.0	44.0	36.06	20.63	
10.2V	A	98.0	74.5	59.8	39.9	31.1	25.3	9.9	6.1	4.0	3.24	1.71	
	W	1183.0	824.1	628.1	381.3	287.6	234.7	98.7	63.0	43.5	35.60	20.51	
10.5V	A	88.5	67.6	55.3	37.7	29.4	24.3	9.7	6.0	3.9	3.20	1.70	
	W	1101.5	775.0	598.4	368.3	279.7	229.7	97.6	62.1	43.0	35.12	20.40	
10.8V	A	79.6	61.6	51.3	35.4	28.1	23.4	9.6	5.9	3.8	3.15	1.69	
	W	988.6	731.1	568.9	354.9	271.2	224.6	96.2	61.1	42.6	34.62	20.29	

Sales Office:

9/F, 30 Wong Chuk Hang Road, Aberdeen, Hong Kong

Tel: 2555-1394 ext163 Web: www.remcobattery.com

Fax: 2873-4229

Email: sales@remcobattery.com