

RM12-65

Technical Specifications

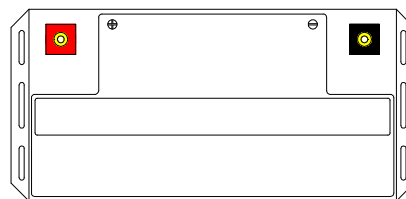
Nominal Voltage	12V
Nominal Capacity	65.0AH(20HR)
Dimension	
Length	13.78inches(350mm)
Width	6.57inches(167mm)
Height	6.85inches(174mm)
Total Height /w Terminal	6.85inches(174mm)
Weight	Approx 51.92lb(23.6kg)
Standard terminal	Type E

Capacity Specifications

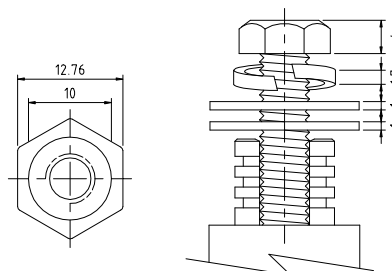
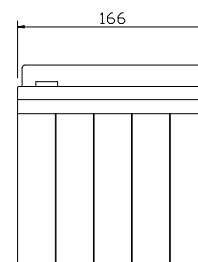
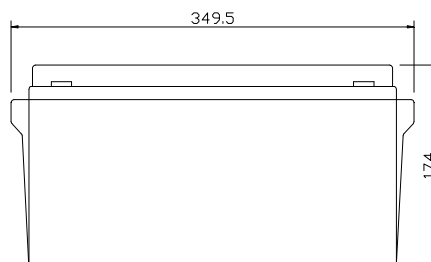
Cut Off Voltage	20Hr Rate(3.25A)	65.0AH
1.75v/c@25°C	10Hr Rate(5.98A)	59.8AH
1.75v/c	5Hr Rate(10.4A)	52.0AH
1.67v/c	1Hr Rate(39A)	39.0AH
1.67v/c	15Min Rate(130A)	32.5AH

Charging Specifications

		Bloc
Charge Voltage(<i>constant</i>)	Float	13.5~13.8
	Cycle	14.4~15.0
Internal Resistance (Fully Charged Battery)	< 5mΩ	
Discharge Current Amps (5 seconds maximum)	650	
Max.Charge Current	19.5A	
Approx Final Charge Current (2.25v/c Float)	0.13(130mA)	
Approx Final Charge Current (2.45v/c Float)	0.65(650mA)	
Self Discharge	6 Months@25°C	



Unit:mm(±0.50)



Type E Terminal
Copper Inserted



Actual Wattage Capacity at Various Discharges (Voltage @25°C)

Cut Off Voltage	Time	Time					
		5min	10min	15min	30min	45min	60min
9.6V	W	3120.0	2028.0	1560.0	897.0	661.7	507.0
9.9V	W	3019.9	1987.7	1528.8	887.9	658.1	501.8
10.2V	W	2889.9	1942.2	1495.0	876.2	645.8	495.3
10.5V	W	2719.6	1874.6	1449.5	856.7	633.1	487.2
10.8V	W	2350.4	1730.3	1385.8	825.5	601.3	473.1

Sales Office:

9/F, 30 Wong Chuk Hang Road, Aberdeen, Hong Kong

Tel: 2555-1394 ext163 Web: www.remcobattery.com

Fax: 2873-4229

Email: sales@remcobattery.com