

## RM12-65DC

### Technical Specifications

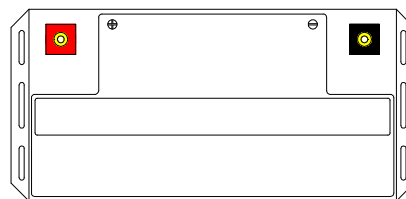
Nominal Voltage	12V
Nominal Capacity	65.0AH(20HR)
Dimension	
Length	13.79inches(350mm)
Width	6.58inches(167mm)
Height	6.85inches(174mm)
Total Height /w Terminal	6.85inches(174mm)
Weight	Approx 51.92lb(23.6kg)
Standard terminal	Type E

### Capacity Specifications

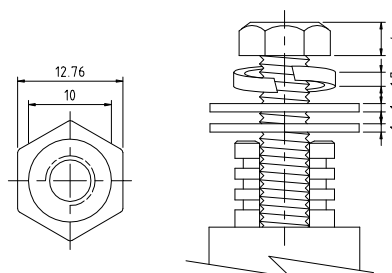
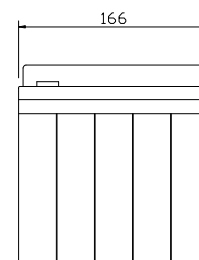
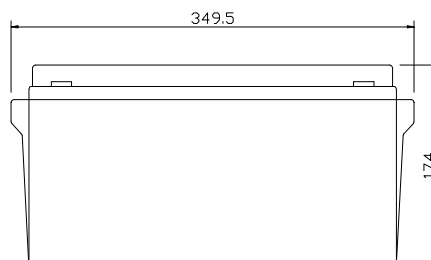
Cut Off Voltage	20Hr Rate(3.25A)	65.0AH
1.75v/c@25°C	10Hr Rate(5.98A)	59.8AH
1.75v/c	5Hr Rate(10.4A)	52AH
1.67v/c	1Hr Rate(39A)	39AH
1.67v/c	30Min Rate(130A)	35.75AH

### Charging Specifications

		Bloc
Charge Voltage( <i>constant</i> )	Float	13.5~13.8
	Cycle	14.4~15.0
Internal Resistance (Fully Charged Battery)	< 5mΩ	
Discharge Current Amps (5 seconds maximum)	650	
Max.Charge Current	19.5A	
Self Discharge	6 Months@25°C	



Unit:mm(±0.50)



Type E Terminal  
Copper Inserted



### Actual Wattage Capacity at Various Discharges (Voltage @25°C)

Cut Off Voltage	Time	Time						
		5min	10min	15min	30min	45min	60min	
9.6V	W	3081.6	2003.0	1540.8	886.0	653.6	500.8	
9.9V	W	2982.7	1963.2	1510.0	877.0	650.0	495.6	
10.2V	W	2854.3	1918.3	1476.6	865.4	637.9	489.2	
10.5V	W	2686.1	1851.5	1431.7	846.2	625.3	481.2	
10.8V	W	2321.5	1709.0	1368.7	815.3	593.9	467.2	

#### Sales Office:

9/F, 30 Wong Chuk Hang Road, Aberdeen, Hong Kong

Tel: 2555-1394 ext163 Web: [www.remcobattery.com](http://www.remcobattery.com)

Fax: 2873-4229

Email: [sales@remcobattery.com](mailto:sales@remcobattery.com)