

RM12-7.0

Technical Specifications

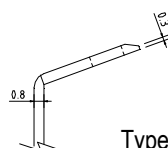
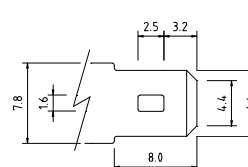
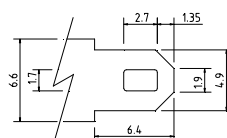
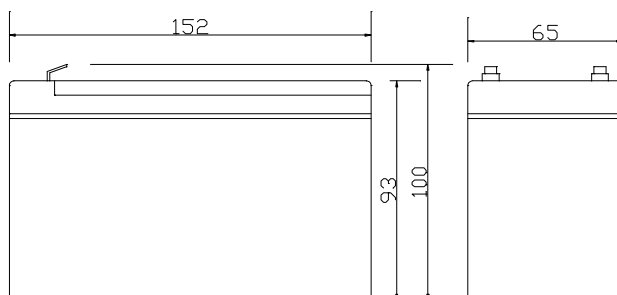
Nominal Voltage	12V
Nominal Capacity	7.2AH(20HR)
Dimension	
Length	5.98inches(152mm)
Width	2.56inches(65mm)
Height	3.66inches(93mm)
Total Height /w Terminal	3.94inches(100mm)
Weight	Approx 4.62lb(2.1kg)
Standard terminal	Type A/G

Capacity Specifications

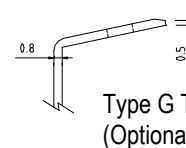
Cut Off Voltage	20Hr Rate(0.35A)	7.0AH
1.75v/c@25°C	10Hr Rate(0.64A)	6.4AH
1.75v/c	5Hr Rate(1.12A)	5.6AH
1.67v/c	1Hr Rate(4.2A)	4.2AH
1.67v/c	15Min Rate(14A)	3.5AH

Charging Specifications

		Bloc
Charge Voltage(<i>constant</i>)	Float	13.5~13.8
	Cycle	14.4~15.0
Internal Resistance (Fully Charged Battery)	< 26mΩ	
Discharge Current Amps (5 seconds maximum)	105	
Max.Charge Current	2.1A	
Approx Final Charge Current (2.25v/c Float)	0.014(14mA)	
Approx Final Charge Current (2.45v/c Float)	0.07(70mA)	
Self Discharge	6 Months@25°C	



Type A Terminal



Type G Terminal
(Optional)



Actual Wattage Capacity at Various Discharges (Voltage @25°C)

Cut Off Voltage	Time	Time						
		5min	10min	15min	30min	45min	60min	
9.6V	W	336.0	218.4	168.0	96.6	71.3	54.6	
9.9V	W	325.2	214.1	164.6	95.6	70.9	54.0	
10.2V	W	311.2	209.2	161.0	94.4	69.6	53.3	
10.5V	W	292.9	201.9	156.1	92.3	68.2	52.5	
10.8V	W	253.1	186.3	149.2	88.9	64.8	50.9	

Sales Office:

9/F, 30 Wong Chuk Hang Road, Aberdeen, Hong Kong

Tel: 2555-1394 ext163 Web: www.remcobattery.com

Fax: 2873-4229

Email: sales@remcobattery.com