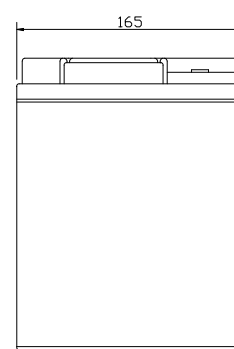
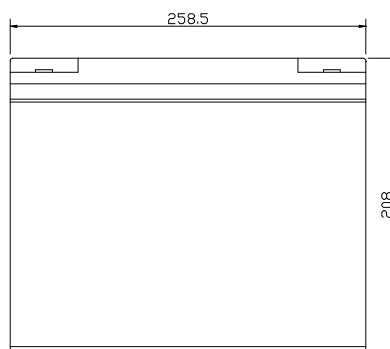
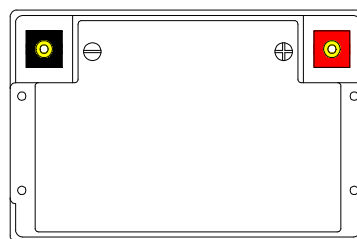


RM12-70

Unit:mm(± 0.50)

Technical Specifications

Nominal Voltage	12V
Nominal Capacity	70.0AH(20HR)
Dimension	
Length	10.24inches(260mm)
Width	6.62inches(168mm)
Height	8.27inches(210mm)
Total Height /w Terminal	8.27inches(210mm)
Weight	Approx 52.36lb(23.8kg)
Standard terminal	Type E

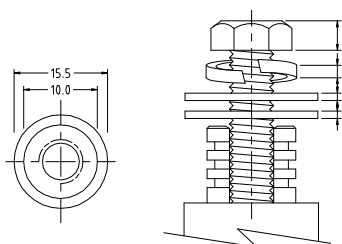


Capacity Specifications

Cut Off Voltage	20Hr Rate(3.5A)	70.0AH
1.75v/c@25°C	10Hr Rate(6.44A)	64.4AH
1.75v/c	5Hr Rate(11.2A)	56AH
1.67v/c	1Hr Rate(42A)	42AH
1.67v/c	15Min Rate(140A)	35AH

Charging Specifications

		Bloc
Charge Voltage(<i>constant</i>)	Float	13.5~13.8
	Cycle	14.4~15.0
Internal Resistance (Fully Charged Battery)	< 5mΩ	
Discharge Current Amps (5 seconds maximum)	700	
Max.Charge Current	21.0A	
Approx Final Charge Current (2.25v/c Float)	0.14(140mA)	
Approx Final Charge Current (2.45v/c Float)	0.55(550mA)	
Self Discharge	6 Months@25°C	



Type E Terminal
Copper Inserted



Actual Wattage Capacity at Various Discharges (Voltage @25°C)

Cut Off Voltage	Time	Time					
		5min	10min	15min	30min	45min	60min
9.6V	W	3360.0	2184.0	1680.0	966.0	712.6	546.0
9.9V	W	3252.2	2140.6	1646.4	956.2	708.7	540.4
10.2V	W	3112.2	2091.6	1610.0	943.6	695.5	533.4
10.5V	W	2928.8	2018.8	1561.0	922.6	681.8	524.7
10.8V	W	2531.2	1863.4	1492.4	889.0	647.5	509.5

Sales Office:

9/F, 30 Wong Chuk Hang Road, Aberdeen, Hong Kong

Tel: 2555-1394 ext163 Web: www.remcobattery.com

Fax: 2873-4229

Email: sales@remcobattery.com

Rev. 100719