

RM12-7.2

Technical Specifications

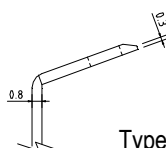
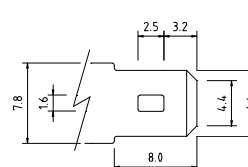
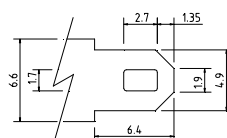
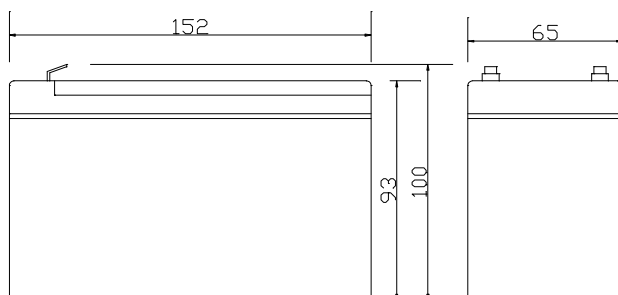
Nominal Voltage	12V
Nominal Capacity	7.2AH(20HR)
Dimension	
Length	5.98inches(152mm)
Width	2.56inches(65mm)
Height	3.66inches(93mm)
Total Height /w Terminal	3.94inches(100mm)
Weight	Approx 4.84lb(2.2kg)
Standard terminal	Type A/G

Capacity Specifications

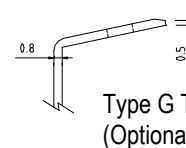
Cut Off Voltage	20Hr Rate(0.36A)	7.2AH
1.75v/c@25°C	10Hr Rate(0.66A)	6.6AH
1.75v/c	5Hr Rate(1.15A)	5.76AH
1.67v/c	1Hr Rate(4.32A)	4.32AH
1.67v/c	15Min Rate(14.4A)	3.6AH

Charging Specifications

		Bloc
Charge Voltage(<i>constant</i>)	Float	13.5~13.8
	Cycle	14.4~15.0
Internal Resistance (Fully Charged Battery)	< 26mΩ	
Discharge Current Amps (5 seconds maximum)	108	
Max.Charge Current	2.16A	
Approx Final Charge Current (2.25v/c Float)	0.014(14mA)	
Approx Final Charge Current (2.45v/c Float)	0.07(70mA)	
Self Discharge	6 Months@25°C	



Type A Terminal



Type G Terminal
(Optional)



Actual Wattage Capacity at Various Discharges (Voltage @25°C)

Cut Off Voltage	Time	Time						
		5min	10min	15min	30min	45min	60min	
9.6V	W	345.6	224.6	172.8	99.4	73.3	56.2	
9.9V	W	334.5	220.2	169.3	98.4	72.9	55.6	
10.2V	W	320.1	215.1	165.6	97.1	71.5	54.9	
10.5V	W	301.2	207.6	160.6	94.9	70.1	54.0	
10.8V	W	260.4	191.7	153.5	91.4	66.6	52.4	

Sales Office:

9/F, 30 Wong Chuk Hang Road, Aberdeen, Hong Kong

Tel: 2555-1394 ext163 Web: www.remcobattery.com

Fax: 2873-4229

Email: sales@remcobattery.com