

RM12-7.2HR

Technical Specifications

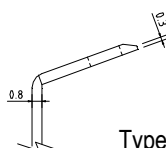
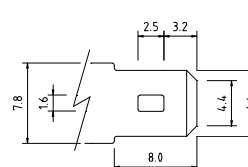
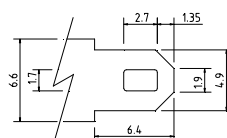
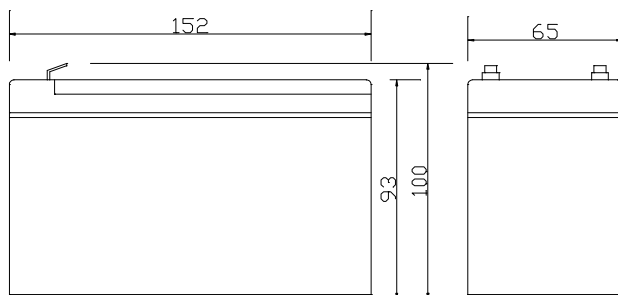
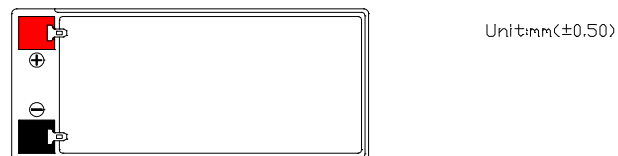
Nominal Voltage	12V
Nominal Capacity	7.2AH(20HR)
Dimension	
Length	5.98inches(152mm)
Width	2.56inches(65mm)
Height	3.66inches(93mm)
Total Height /w Terminal	3.94inches(100mm)
Weight	Approx 5.17lb(2.35kg)
Standard terminal	Type A/G

Capacity Specifications

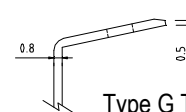
Cut Off Voltage		
1.75v/c@25°C	10Hr Rate(0.66A)	6.6AH
1.75v/c	5Hr Rate(1.22A)	6.10AH
1.67v/c	1Hr Rate(4.46A)	4.46AH
1.67v/c	15Min Rate(14.4A)	3.60AH

Charging Specifications

		Bloc
Charge Voltage(<i>constant</i>)	Float	13.5~13.8
	Cycle	14.4~15.0
Internal Resistance (Fully Charged Battery)	< 26mΩ	
Discharge Current Amps (5 seconds maximum)	108	
Max.Charge Current	2.16A	
Self Discharge	6 Months@25°C	



Type A Terminal



Type G Terminal
(Optional)



Actual Wattage Capacity at Various Discharges (Voltage @25°C)

Cut Off Voltage	Time	Time						
		5min	10min	15min	30min	45min	60min	
9.6V	W	350.4	227.8	175.2	100.7	74.3	56.9	
9.9V	W	339.2	223.2	171.7	99.7	73.9	56.4	
10.2V	W	324.6	218.1	167.9	98.4	72.5	55.6	
10.5V	W	305.4	210.5	162.8	96.2	71.1	54.7	
10.8V	W	264.0	194.3	155.6	92.7	67.5	53.1	

Sales Office:

9/F, 30 Wong Chuk Hang Road, Aberdeen, Hong Kong

Tel: 2555-1394 ext163 Web: www.remcobattery.com

Fax: 2873-4229

Email: sales@remcobattery.com