

RM12-80

Unit:mm(±0.50)

Technical Specifications

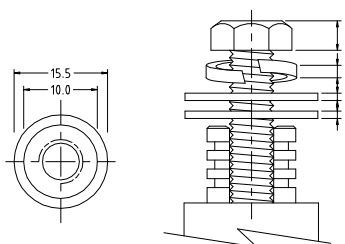
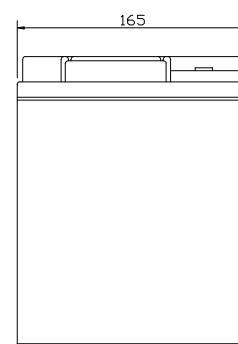
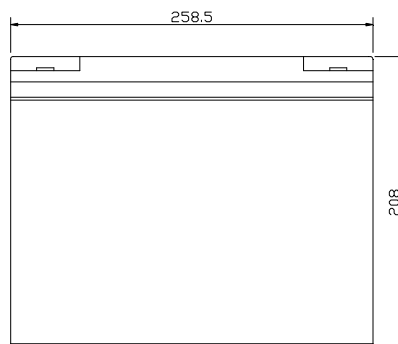
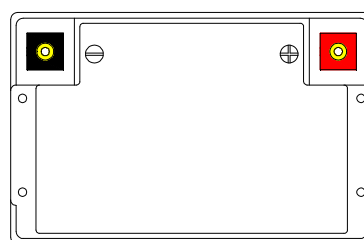
Nominal Voltage	12V
Nominal Capacity	80.0AH(20HR)
Dimension	
Length	10.24inches(260mm)
Width	6.61inches(168mm)
Height	8.27inches(210mm)
Total Height /w Terminal	8.27inches(210mm)
Weight	Approx 54.56lb(24.8kg)
Standard terminal	Type E

Capacity Specifications

Cut Off Voltage	20Hr Rate(4.0A)	80.0AH
1.75v/c@25°C	10Hr Rate(7.36A)	73.6AH
1.75v/c	5Hr Rate(12.8A)	64AH
1.67v/c	1Hr Rate(48A)	48AH
1.67v/c	15Min Rate(160A)	40AH

Charging Specifications

		Bloc
Charge Voltage(<i>constant</i>)	Float	13.5~13.8
	Cycle	14.4~15.0
Internal Resistance (Fully Charged Battery)	< 4mΩ	
Discharge Current Amps (5 seconds maximum)	800	
Max.Charge Current	24.0A	
Approx Final Charge Current (2.25v/c Float)	0.16(160mA)	
Approx Final Charge Current (2.45v/c Float)	0.60(600mA)	
Self Discharge	6 Months@25°C	



Type E Terminal
Copper Inserted



Actual Wattage Capacity at Various Discharges (Voltage @25°C)

Cut Off Voltage	Time	Time					
		5min	10min	15min	30min	45min	60min
9.6V	W	3840.0	2496.0	1920.0	1104.0	814.4	624.0
9.9V	W	3716.8	2446.4	1881.6	1092.8	809.9	617.6
10.2V	W	3556.8	2390.4	1840.0	1078.4	794.9	609.6
10.5V	W	3347.2	2307.2	1784.0	1054.4	779.2	599.7
10.8V	W	2892.8	2129.6	1705.6	1016.0	740.0	582.2

Sales Office:

9/F, 30 Wong Chuk Hang Road, Aberdeen, Hong Kong

Tel: 2555-1394 ext163 Web: www.remcobattery.com

Fax: 2873-4229

Email: sales@remcobattery.com

Rev. 100719