

RM12-80DC

Unit:mm(±0.50)

Technical Specifications

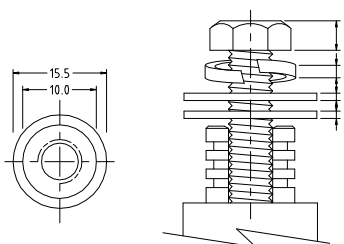
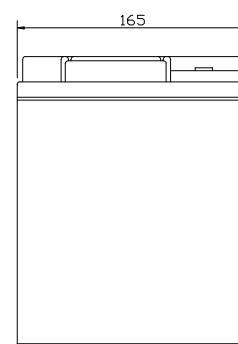
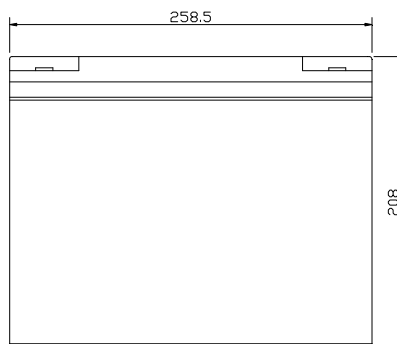
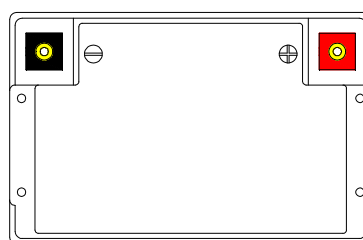
Nominal Voltage	12V
Nominal Capacity	80.0AH(20HR)
Dimension	
Length	10.24inches(260mm)
Width	6.62inches(168mm)
Height	8.27inches(210mm)
Total Height /w Terminal	8.27inches(210mm)
Weight	Approx 54.56lb(24.8kg)
Standard terminal	Type E

Capacity Specifications

Cut Off Voltage	20Hr Rate(4.0A)	80.0AH
1.75v/c@25°C	10Hr Rate(7.36A)	73.6AH
1.75v/c	5Hr Rate(12.8A)	64AH
1.67v/c	1Hr Rate(48A)	48AH
1.67v/c	30Min Rate(88A)	44AH

Charging Specifications

		Bloc
Charge Voltage(<i>constant</i>)	Float	13.5~13.8
	Cycle	14.4~15.0
Internal Resistance (Fully Charged Battery)	< 4mΩ	
Discharge Current Amps (5 seconds maximum)	800	
Max.Charge Current	24.0A	
Self Discharge	6 Months@25°C	



Type E Terminal
Copper Inserted



Actual Wattage Capacity at Various Discharges (Voltage @25°C)

Cut Off Voltage	Time	Time					
		5min	10min	15min	30min	45min	60min
9.6V	W	3792.0	2464.8	1896.0	1090.2	804.2	616.2
9.9V	W	3670.3	2415.8	1858.1	1079.1	799.8	609.9
10.2V	W	3512.3	2360.5	1817.0	1064.9	784.9	602.0
10.5V	W	3305.4	2278.4	1761.7	1041.2	769.5	592.2
10.8V	W	2856.6	2103.0	1684.3	1003.3	730.8	575.0

Sales Office:

9/F, 30 Wong Chuk Hang Road, Aberdeen, Hong Kong

Tel: 2555-1394 ext163 Web: www.remcobattery.com

Fax: 2873-4229

Email: sales@remcobattery.com

Rev. 100719