

RM12-90

Technical Specifications

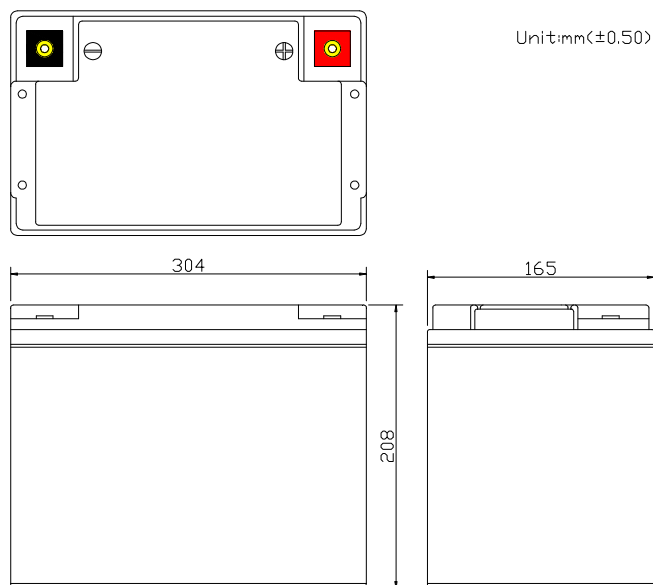
Nominal Voltage	12V
Nominal Capacity	90.0AH(20HR)
Dimension	
Length	12.05inch(306mm)
Width	6.65inches(169mm)
Height	8.19inches(208mm)
Total Height /w Terminal	8.19inches(208mm)
Weight	Approx 63.36lb(28.8kg)
Standard terminal	Type E

Capacity Specifications

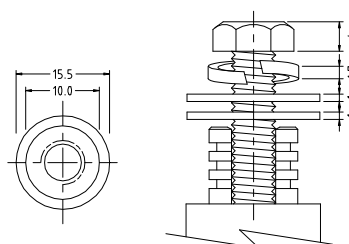
Cut Off Voltage	20Hr Rate(4.5A)	90.0AH
1.75v/c@25°C	10Hr Rate(8.28A)	82.8AH
1.75v/c	5Hr Rate(14.4A)	72AH
1.67v/c	1Hr Rate(54A)	54AH
1.67v/c	15Min Rate(180A)	45AH

Charging Specifications

		Bloc
Charge Voltage(<i>constant</i>)	Float	13.5~13.8
	Cycle	14.4~15.0
Internal Resistance (Fully Charged Battery)	< 4mΩ	
Discharge Current Amps (5 seconds maximum)	900	
Max.Charge Current	27.0A	
Approx Final Charge Current (2.25v/c Float)	0.18(180mA)	
Approx Final Charge Current (2.45v/c Float)	0.65(650mA)	
Self Discharge	6 Months@25°C	



Unit:mm(±0.50)



Type E Terminal
Copper Inserted



Actual Wattage Capacity at Various Discharges (Voltage @25°C)

Cut Off Voltage	Time	Time					
		5min	10min	15min	30min	45min	60min
9.6V	W	4320.0	2808.0	2160.0	1242.0	916.2	702.0
9.9V	W	4181.4	2752.2	2116.8	1229.4	911.2	694.8
10.2V	W	4001.4	2689.2	2070.0	1213.2	894.2	685.8
10.5V	W	3765.6	2595.6	2007.0	1186.2	876.6	674.6
10.8V	W	3254.4	2395.8	1918.8	1143.0	832.5	655.0

Sales Office:

9/F, 30 Wong Chuk Hang Road, Aberdeen, Hong Kong

Tel: 2555-1394 ext163 Web: www.remcobattery.com

Fax: 2873-4229

Email: sales@remcobattery.com