

## RM12-9HR

### Technical Specifications

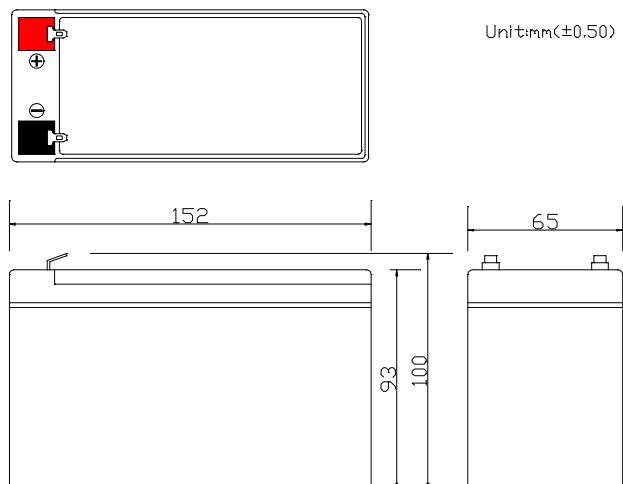
Nominal Voltage	12V
Nominal Capacity	9.0AH(20HR)
Dimension	
Length	5.98inches(152mm)
Width	2.56inches(65mm)
Height	3.66inches(93mm)
Total Height /w Terminal	3.94inches(100mm)
Weight	Approx 5.72lb(2.6kg)
Standard terminal	Type G

### Capacity Specifications

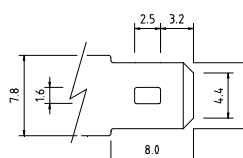
Cut Off Voltage		
1.75v/c@25°C	10Hr Rate(0.828A)	8.28AH
1.75v/c	5Hr Rate(1.53A)	7.65AH
1.67v/c	1Hr Rate(5.58A)	5.58AH
1.67v/c	15Min Rate(18A)	4.50AH

### Charging Specifications

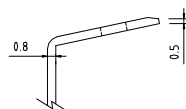
		Bloc
Charge Voltage( <i>constant</i> )	Float	13.5~13.8
	Cycle	14.4~15.0
Internal Resistance (Fully Charged Battery)	< 23mΩ	
Discharge Current Amps (5 seconds maximum)	135	
Max.Charge Current	2.7A	
Self Discharge	6 Months@25°C	



Unit:mm(±0.50)



Type G Terminal



### Actual Wattage Capacity at Various Discharges (Voltage @25°C)

Cut Off Voltage	Time	Time						
		5min	10min	15min	30min	45min	60min	
9.6V	W	436.8	283.9	218.4	125.6	92.6	71.0	
9.9V	W	422.8	278.3	214.0	124.3	92.1	70.3	
10.2V	W	404.6	271.9	209.3	122.7	90.4	69.3	
10.5V	W	380.7	262.4	202.9	119.9	88.6	68.2	
10.8V	W	329.1	242.2	194.0	115.6	84.2	66.2	

#### Sales Office:

9/F, 30 Wong Chuk Hang Road, Aberdeen, Hong Kong

Tel: 2555-1394 ext163 Web: [www.remcobattery.com](http://www.remcobattery.com)

Fax: 2873-4229

Email: [sales@remcobattery.com](mailto:sales@remcobattery.com)