

## RM6-200

### Technical Specifications

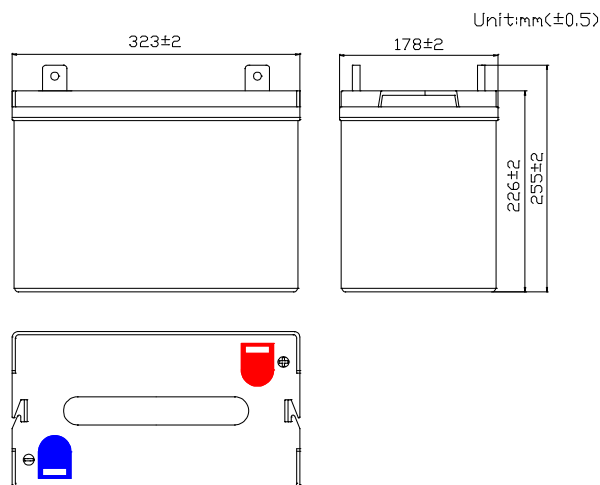
Nominal Voltage	6V
Nominal Capacity	200AH(20HR)
Dimension	
Length	12.72inches(323mm)
Width	7.01inches(178mm)
Height	8.90inches(226mm)
Total Height /w Terminal	10.08inches(256mm)
Weight	Approx 67.1lb(30.5kg)
Standard terminal	Type F16

### Capacity Specifications

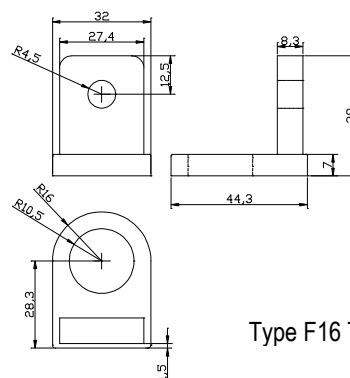
Cut Off Voltage	20Hr Rate(10A)	200.0AH
1.75v/c@25°C	10Hr Rate(18.4A)	184AH
1.75v/c	5Hr Rate(32A)	160AH
1.67v/c	1Hr Rate(120A)	120AH
1.67v/c	15Min Rate(352A)	88AH

### Charging Specifications

		Bloc
Charge Voltage( <i>constant</i> )	Float	6.75~6.90
	Cycle	7.25~7.50
Internal Resistance (Fully Charged Battery)	< 2mΩ	
Discharge Current Amps (5 seconds maximum)	1000	
Max.Charge Current	60A	



Unit:mm(±0.2)



Type F16 Terminal

### Actual Wattage Capacity at Various Discharges (Voltage @25°C)

Cut Off Voltage	Time					
		10min	15min	30min	45min	60min
4.80V	W	3120.0	2400.0	1380.0	1018.0	780.0
4.95V	W	3058.0	2352.0	1366.0	1012.0	772.0
5.10V	W	2988.0	2300.0	1348.0	993.0	762.0
5.25V	W	2884.0	2230.0	1318.0	974.0	749.0
5.40V	W	2662.0	2132.0	1270.0	925.0	727.0

#### Sales Office:

9/F, 30 Wong Chuk Hang Road, Aberdeen, Hong Kong

Tel: 2555-1394 ext163 Web: [www.remcobattery.com](http://www.remcobattery.com)

Fax: 2873-4229

Email: [sales@remcobattery.com](mailto:sales@remcobattery.com)